

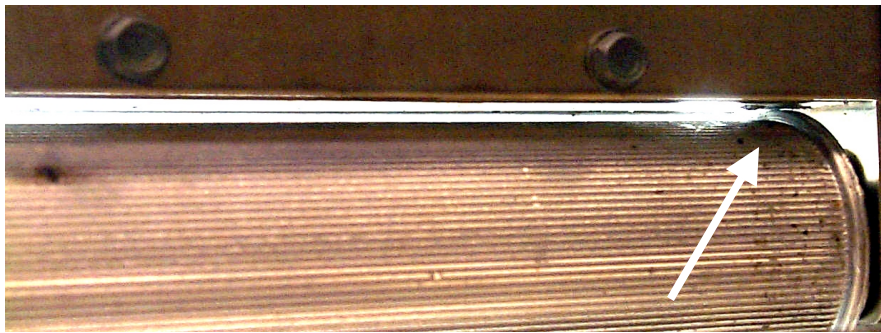
Vertical Toaster Retrofit Kit 826-1614

In This Kit		
Quantity	Part No.	Description
1	210-0318	Crumb barrier
6	809-0266	#10 screws
1	819-5785	Instructions

Follow these steps to inspect the lower drive roller clearance on a McDonald's Vertical Toaster. Install new crumb barrier on base of platen only if there is contact between the barrier and the roller's inner side lip.

NOTE: TOASTER MUST BE AT WORKING TEMPERATURE FOR 30 MINUTES PRIOR TO INSPECTION.

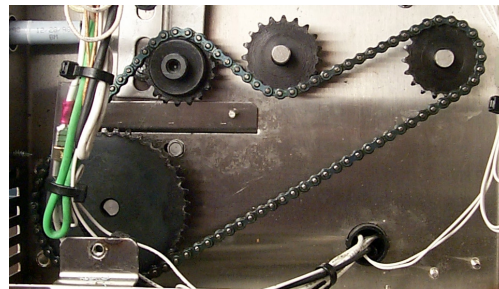
- Disconnect electric power.
- With toaster at operating temperature, remove back of unit and inspect for contact between the platen and the inner rear roller.



Contact between the rear roller and the crumb barrier on the bottom of the platen, as shown here, calls for the installation of the new crumb barrier.

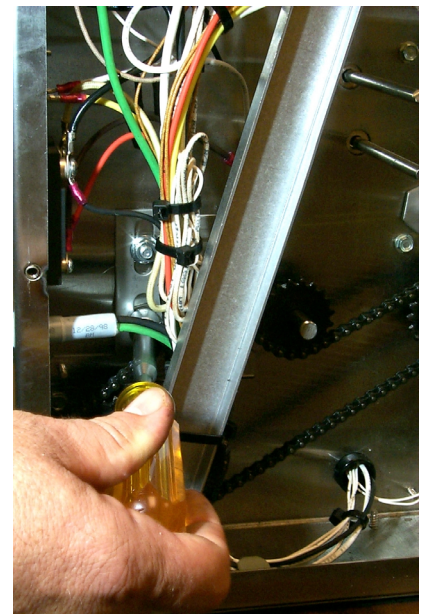
- Contact, or scoring on the roller indicating contact, is reason to replace the crumb barrier on the bottom of the platen.

If there is contact, proceed with these instructions. If no contact is evident, do not install new barrier.



Drive train.

- Set compression knobs to E and 5, the lightest settings.
- Remove cover, belts, knobs, and side plate.
- Loosen the idler sprocket assembly and slide it to the bottom. This allows maximum slack in the chain.
- Remove the chain from the rear roller sprocket, then the front sprocket.
- Loosen the setscrews that secure the small sprocket to the rear drive roller shaft. Remove sprocket from shaft.



Loosening idler to remove chain.

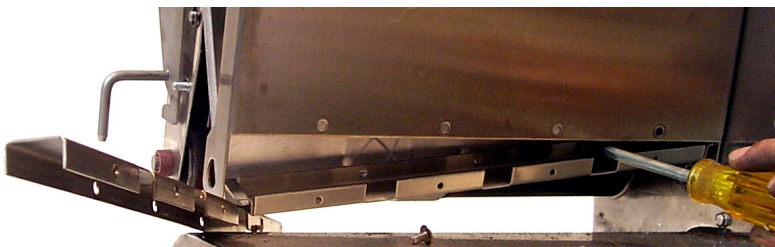
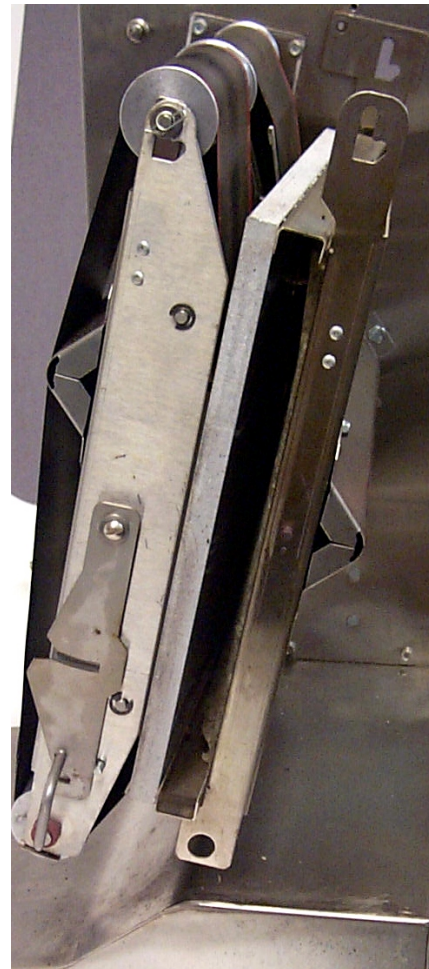
Installing Crumb Barrier

- Remove the drive roller axle through the control panel side.
- Remove the top roller.
- Remove the screws at the top and bottom of the rear toasting conveyor. These screws secure the platen to the toasting conveyor.
- Work platen assembly slightly outward and remove outer and inner plungers.



Remove screws securing platen to toaster conveyor assembly.

With the eight screws, which secure the platen assembly to the toaster conveyor assembly removed (right photo), the platen is shifted to just beyond the outer edge of the conveyor assembly.

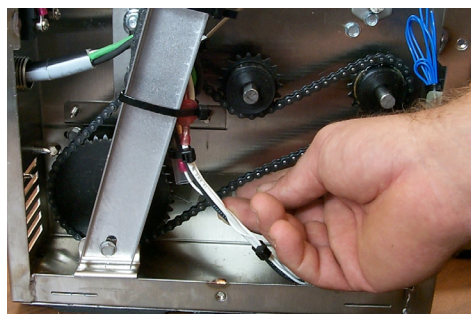
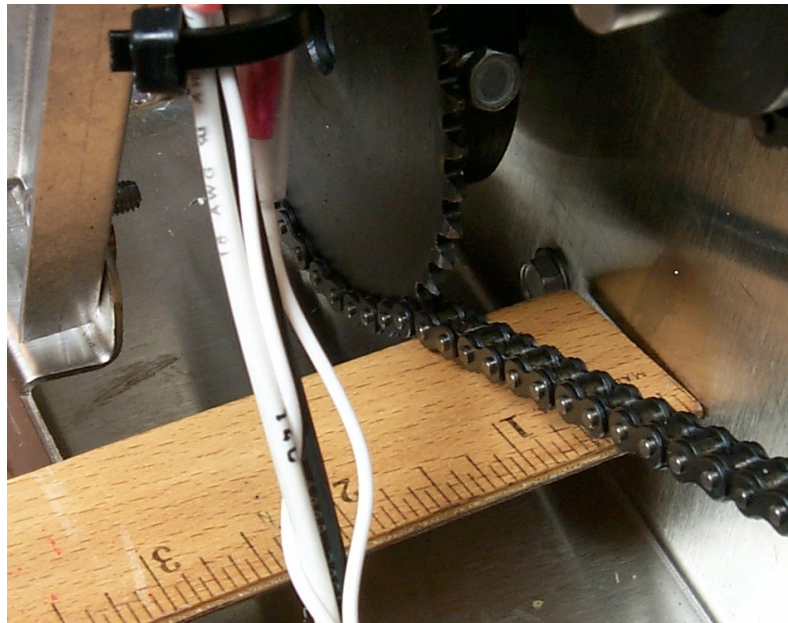


Allow the platen to drop slightly, which will expose the crumb barrier attached to the bottom of the platen. Remove the three screws securing the crumb barrier and replace with the provided crumb barrier. Use the old barrier as a wedge to hold the platen in place while securing the new crumb barrier.

- Pull platen gently away from the control housing until the leads clear. Remove inner plunger.
- Extend platen forward and shift away from the controller, allowing the platen to drop slightly. The bottom of the existing crumb barrier will be exposed.
- Remove the three screws that secure the crumb barrier to the platen.
- Install new crumb barrier. **Note: Use old crumb barrier to position platen for installation of new barrier.**
- Raise platen and slide back toward control housing.
- Reposition inner spring plunger assembly.
- Slide platen into position against control housing.
- With platen pushed slightly forward, install outer plunger spring assembly.
- Reinstall eight screws, which secure the platen to the conveyor assembly.
- Install the upper roller assembly.
- Reinstall lower rear drive roller.
- Ensure e-clip is securely snapped on the drive axle.

Reinstall sprocket, chain

- Replace drive-roller sprocket. Ensure the chain travels in a flat plane. Use a ruler to ensure the drive-roller sprocket is set at the same depth as the drive sprocket.
- Use the idler to adjust the chain tension. There should be $\frac{1}{4}$ " deflection from center with about two pounds of force applied.
- With rollers in place and the side panel off, run the unit to ensure correct tracking of the chain. Misaligned sprockets will cause the chain to pop. Correct as necessary.



The drive sprockets should be aligned with the motor sprocket (above) to ensure the chain runs in a flat plane. The chain tension (left) should allow $\frac{1}{4}$ " deflection from center.

- Ensure all wires are secure and all are well away from the heat of the platen.
- Check line voltage to ensure it matches rating plate. If line voltage differs from rating plate, move wiring on transformer to reflect line voltage.
- Reinstall back, side, knobs.
- Run toaster to ensure correct operation.